

DECCA | CONTRACT

CAID



Designed by Jess Sorel, the Caid collection establishes presence through subtle shifts in its clean, quiet geometry. The arms taper back from the base towards a diagonal fold line on each side, creating visual interest, as well as a comfortable “sit.” Suited to either public or private settings, the Caid offering includes a Lounge Chair with a swivel option, as well as a Love Seat and Sofa, all in multiple back heights that extend the faceted profile to form a sense of surround and privacy. The articulated silhouette is balanced and grounded by a sculpted plinth base or, for a lighter look, wood legs set at a slight angle.

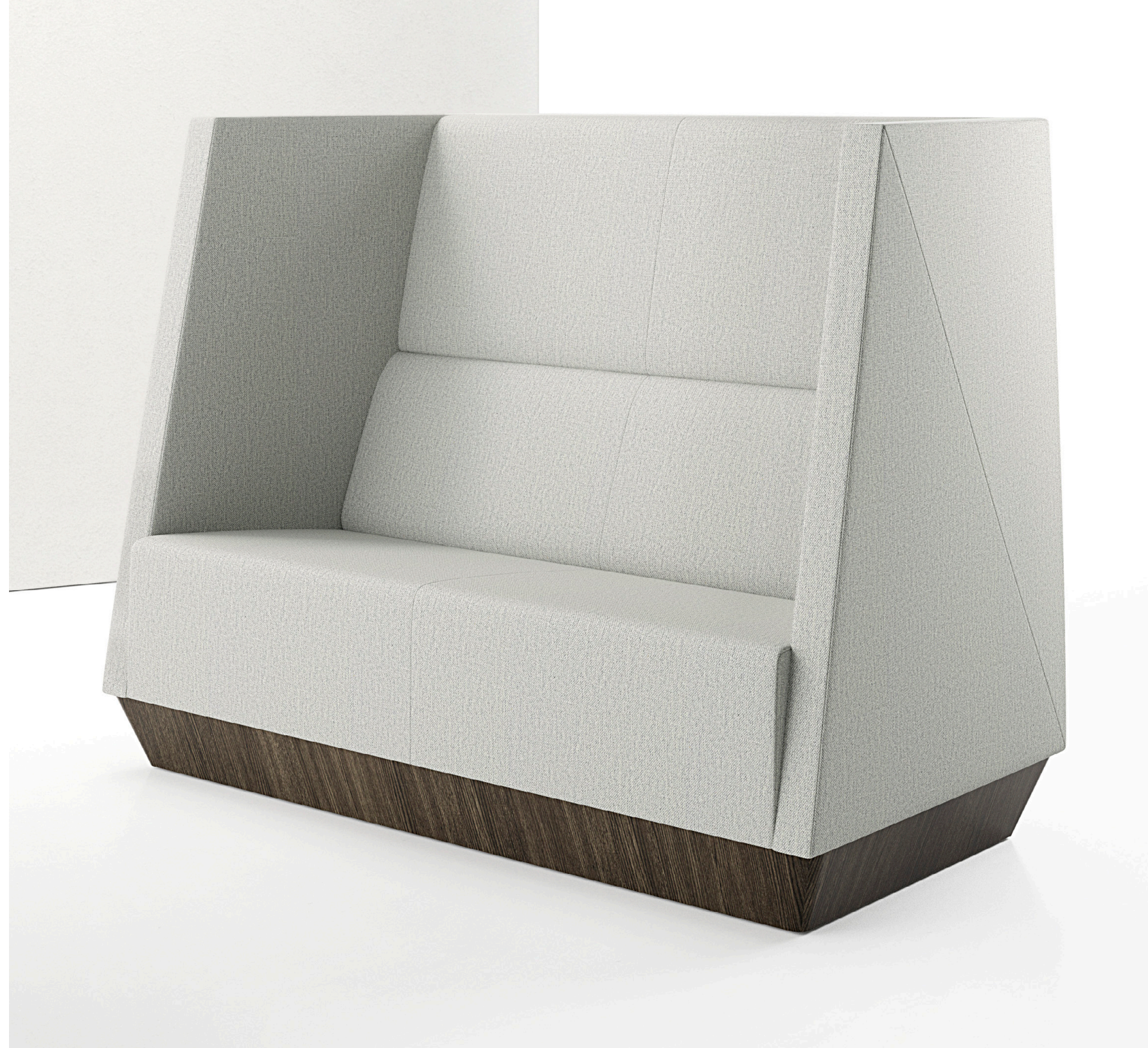
















Jess Sorel

Jess Sorel's career has spanned nearly twenty years in the contract furniture industry, resulting in a body of work that demonstrates his passion for questioning the status quo. Formerly designer and design director at Metro Furniture, Jess established sorelstudio in the San Francisco Bay Area to provide product design, creative direction and design strategy services to its clientele. He thoroughly enjoys working with his clients to help achieve their creative and strategic objectives. Sorel's thoughtful approach is evident in the success of his many projects and product designs.

Driven by an intense curiosity about the context in which objects are made and used, Sorel's primary focus is on understanding and interpreting the world around him, with an eye on the evolution of culture and technology and their impact on the way we live, work and play.

Jess Sorel holds numerous design and utility patents and his work has been featured in *Abitare*, *Azure*, *Blueprint*, *Contract*, *Domus*, *Dwell*, *Fast Company*, *I.D. Magazine*, *Interior Design* and *Metropolis*.

DECCA | CONTRACT